



# JACKETS

[WWW.TURTLES.AE](http://WWW.TURTLES.AE)

# JACKETS

A JACKET PRIMARILY REFERS TO A SHORT, HIP- OR WAIST-LENGTH OUTER GARMENT FOR THE UPPER BODY, TYPICALLY FEATURING SLEEVES AND A FRONT FASTENING SUCH AS A ZIPPER OR BUTTONS. BROADLY, THE TERM ALSO DESCRIBES VARIOUS TYPES OF PROTECTIVE OR DECORATIVE OUTER COVERINGS

---

[www.turtles.ae](http://www.turtles.ae)

# HOODIES

A hoodie is a hooded sweatshirt, typically featuring **long sleeves**, an attached **hood** (often with drawstrings), and usually a **kangaroo pocket** at the front. They are primarily designed for warmth, comfort, and a casual aesthetic.

## Key Components and Features

- **Hood:** The defining characteristic of a hoodie, this head covering is generally made from two or three fabric panels and can be adjusted with a drawstring or cord to protect against wind and cold. The hood may also be lined for extra warmth.
- **Pockets:** Most hoodies feature a large, single "kangaroo" pouch pocket on the front for keeping hands warm or storing small items. Zip-up styles may feature split kangaroo pockets or separate side pockets, sometimes with zippers for secure storage.
- **Sleeves and Cuffs:** They have long sleeves with ribbed cuffs at the wrists to ensure the garment stays in place and retains warmth.
- **Hem:** The bottom hem of the hoodie is also typically ribbed to provide a snug fit around the hips.





# LEATHER JACKETS

These jackets are men's distressed coffee brown genuine sheepskin leather bomber jacket with a hood.

- Style: It is a slim-fit, hooded bomber-style jacket with biker design elements on the shoulders and chest. It features a full zip-front closure and a ribbed knit waistband and cuffs.
- 
- Outer Fabric: The outer material is made from high-quality, genuine sheepskin or lambskin leather in a distressed coffee brown finish.
- 
- Inner Fabric: The jacket typically includes a soft and comfortable inner lining, which can be polyester or quilted material for added warmth.
- 
- Features: Key features include a cozy hood with drawstrings, a durable YKK zipper closure, and strategically placed pockets.



# SWEATSHIRT

The garment shown is typically referred to as a half-zip or quarter-zip pullover. It can also be called a fleece sweatshirt or a high-neck sweater, often with a fleece lining.

**Key characteristics include:**

- Design: A long-sleeved top with a collar that zips down partially, usually to the chest area.
- Material: Often made from or lined with warm materials like fleece, suitable for colder weather or as a layering piece.
- Features: The specific item in the image has a kangaroo pocket, brown elbow patches, and a faux-fur lining in the collar area.





These jacket are varsity jacket, also commonly referred to as a letterman jacket. This style of casual outerwear has a distinct definition and history:

- Key Characteristics: Varsity jackets are typically characterized by a wool body and contrasting leather sleeves. They feature a round, ribbed collar, matching ribbed cuffs and hem (often with contrasting stripes), and a front closure with snap buttons rather than a zipper.
- Origin and Symbolism: The jacket originated in American academia, first appearing at Harvard in 1865 as a thick knit sweater. It was traditionally worn by high school or college athletes to symbolize academic or athletic achievements, pride, and strength. The large chenille letter patches, like the 'A' and '0' seen in the image, represent these accomplishments and school identity.
- Modern Use: While once exclusively linked with school sports, the varsity jacket has evolved into a popular fashion item for casual wear.

# LETTERMAN JACKET



# WATERPROOF JACKETS

A **waterproof jacket** is a specialized outer garment designed to be completely impervious to water penetration, keeping the wearer dry even during prolonged exposure to heavy rain or snow. Unlike water-resistant jackets, which only offer light protection, a true waterproof jacket serves as an impenetrable barrier.

## Key Construction Features

A jacket's waterproofness depends on more than just the fabric; its construction must eliminate potential entry points for water.

- **Waterproof Membrane:** Most high-end jackets use a breathable membrane (like GORE-TEX or eVent) with microscopic pores that block liquid water droplets but allow sweat vapor to escape.
- **Taped Seams:** Every stitch in a jacket is a potential leak point. Waterproof jackets have seams heat-sealed with waterproof tape to ensure total impermeability.
- **DWR Coating:** A Durable Water Repellent (DWR) finish is applied to the outer layer, causing water to bead up and roll off rather than saturating the fabric, which preserves breathability.
- **Waterproof Zippers:** Many models feature rubberized zippers or storm flaps (protective fabric covers) to prevent moisture from seeping through the front closure.





*Design Options*

## LADIES JACKETS

---

Women's jackets come in many styles, each offering a unique look and function, from the **edgy leather jacket** to the sophisticated **blazer** and the cozy **puffer jacket**. The choice of jacket can significantly alter an outfit's style, adapting it for different occasions and weather conditions.



# LADIES JACKETS

## DESIGN OPTIONS

### Key Characteristics

- **Length:** Typically reaches the waist or hip, distinguishing it from longer "coats" that usually extend to the mid-thigh or knee.
- **Fit:** Often nipped at the waist or contoured to fit curves, contrasting with the boxier, straighter structure found in men's jackets.
- **Design Details:** Traditionally, women's jackets feature zippers or buttons on the left side (whereas men's are on the right).
- **Functionality:** Modern 2025 designs often integrate specialized features such as moisture-wicking fabrics, lightweight thermal linings, and adjustable cuffs or waistlines for a customized fit.



# LADIES JACKETS

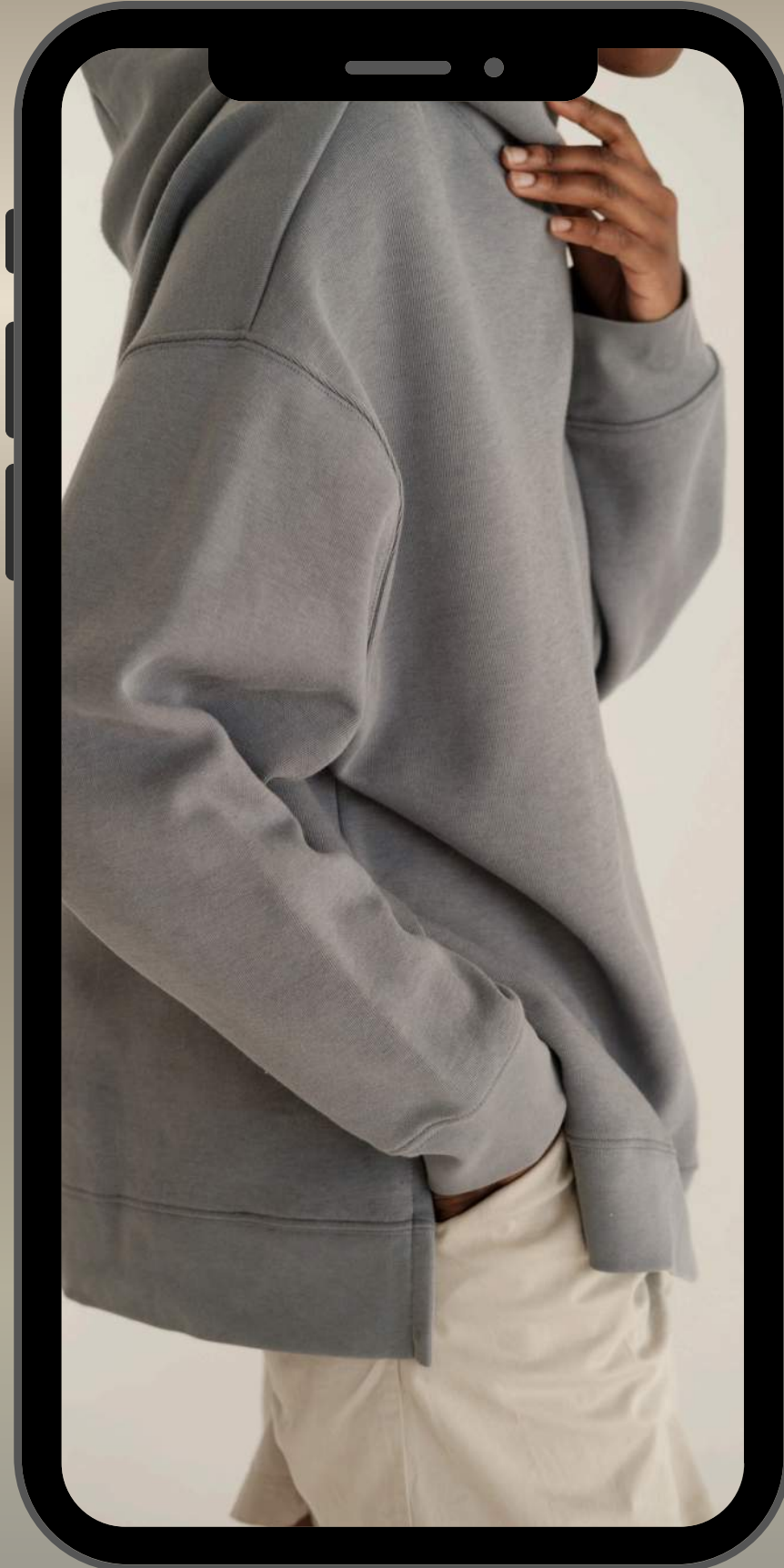
## Design Options

Ladies' winter jackets rely on specific shell materials for protection and various fills for insulation to provide warmth and comfort in cold weather.

### Outer Shell Fabrics

The outer layer of a winter jacket is crucial for protection against wind, snow, and rain.

- **Polyester:** A common and versatile material, polyester is durable, lightweight, and can be treated with coatings like a polyurethane (PU) coating or DWR (Durable Water Repellent) finish to become water-resistant or waterproof.
- **Nylon:** Known for its strength and sleek appearance, nylon is highly durable and often used in performance-oriented outerwear. It is also often DWR-coated for water repellency.
- **Wool/Wool Blends:** For more classic and formal winter coats, wool is a primary choice due to its natural insulating properties and durability. Blends with acrylic or polyester enhance durability and shape retention.



---

# LET'S CONNECT WITH US

---

+971 526578322  
[www.turtles.ae](http://www.turtles.ae)

[info@turtles.ae](mailto:info@turtles.ae)